



Heller Industries, Inc.

4 Vreeland Road,
Florham Park, NJ 07932
Phone: (973) 377-6800
Fax: (973) 377-3862

SOP085 - HELLER OVEN SOFTWARE INSTALLATION PROCEDURE for WINDOWS 7, 8 and 10

For version 8.0.0.x

DATE	REV	ECN - DESCRIPTION OF CHANGE	Initials
02/20/2014	INT	ECN 140003-001	TP
07/06/2015	A	ECN 150016-001, for version 8.0.0.x	TP
06/21/2016	B	ECN 160013-006	PL



Heller Industries, Inc.

4 Vreeland Road,
Florham Park, NJ 07932
Phone: (973) 377-6800
Fax: (973) 377-3862

Table of Contents

I.	Basic PC System requirement:	3
II.	Oven program installation, <i>Windows 7</i>	3
III.	Oven program installation, <i>Windows 8 or 10</i>	9
IV.	Setting up computer IP address: (192.168.10.1).....	13
V.	Installing .Net3.5 framework for Windows 10	17
VI.	HC2 controller driver version check and upgrade:	17
VII.	Uninstalling older version software:	23



Heller Industries, Inc.

4 Vreeland Road,
Florham Park, NJ 07932
Phone: (973) 377-6800
Fax: (973) 377-3862

I. Basic PC System requirement:

OS: Windows 7/8.1 or 10 (32bit/64bit, Home basic, premium or Professional)

Processor speed: preferred 2GHz or more

RAM: preferred 4 GB (8GB for 64bit system)

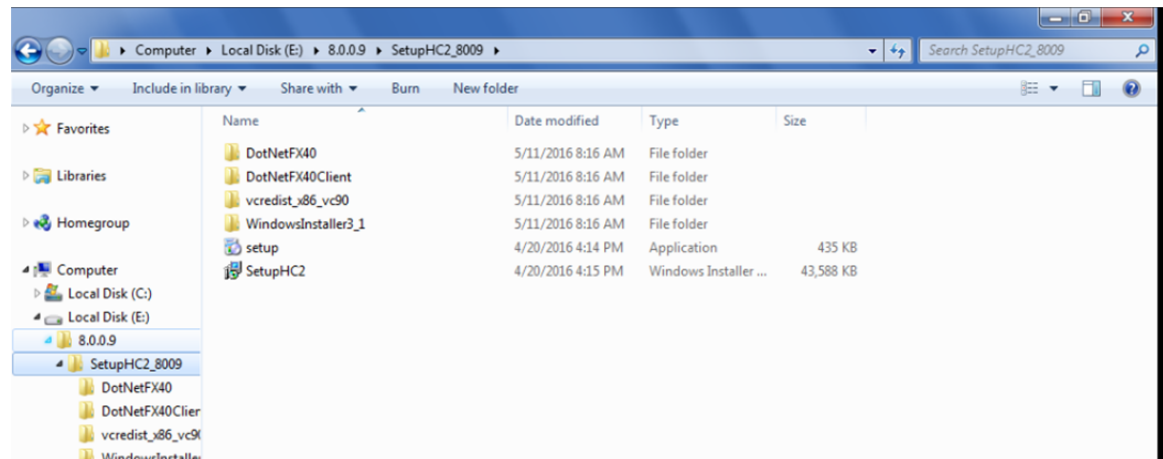
Ethernet (TCP/IP) port: for HC2 controller communication

Notes:

Make sure to uninstall any existing oven software version before installing new software version. Follow section VII at the end of this document for uninstalling oven software.

II. Oven program installation, *Windows 7*

1. Run the setup.exe file from the software installation CD or a drive folder.
Make sure all files and folders are present as shown below before running setup.exe.



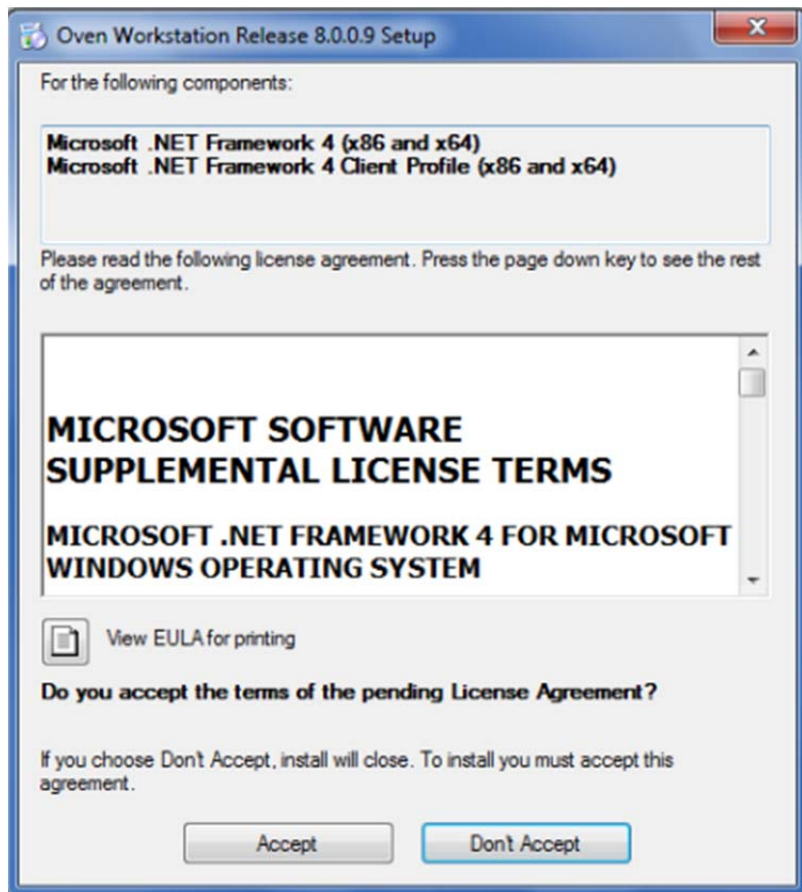


HELLER
INDUSTRIES

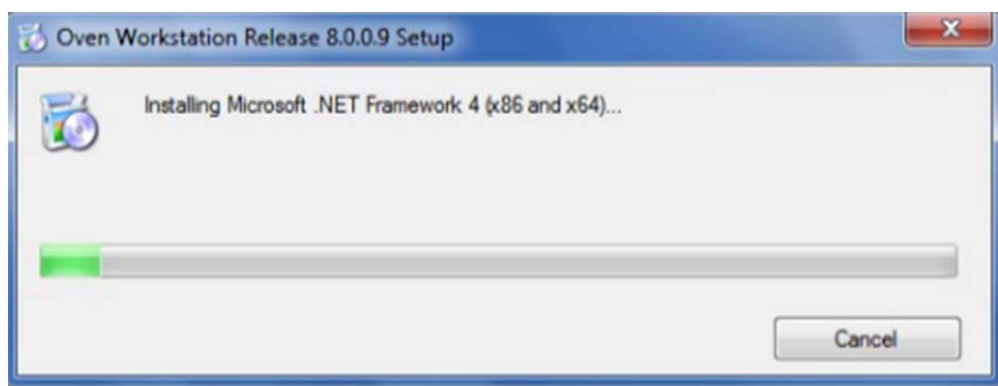
Heller Industries, Inc.

4 Vreeland Road,
Florham Park, NJ 07932
Phone: (973) 377-6800
Fax: (973) 377-3862

2. Various installation windows will appear next.
 - a. If .NET Framework 4 is not installed on the PC, the following message will display. Click Accept.



3. The installation will start.



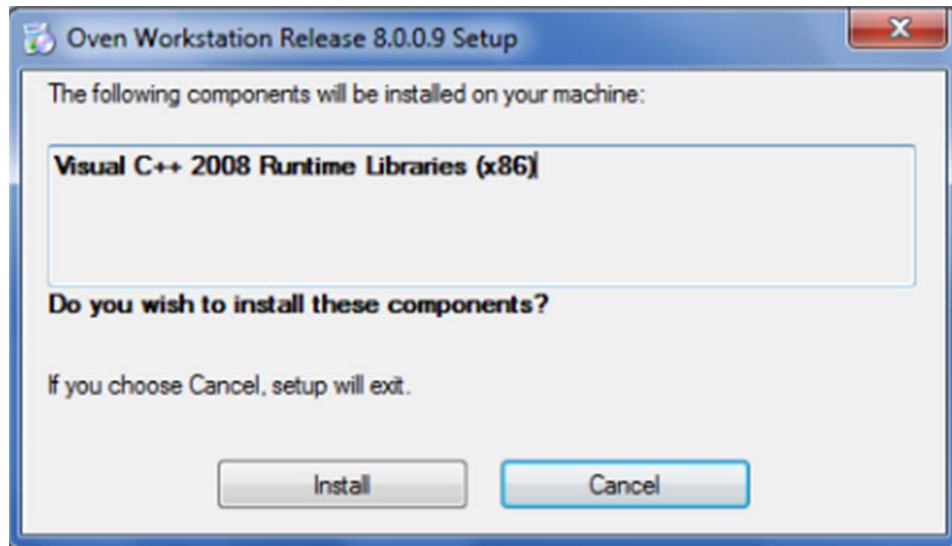


HELLER
INDUSTRIES

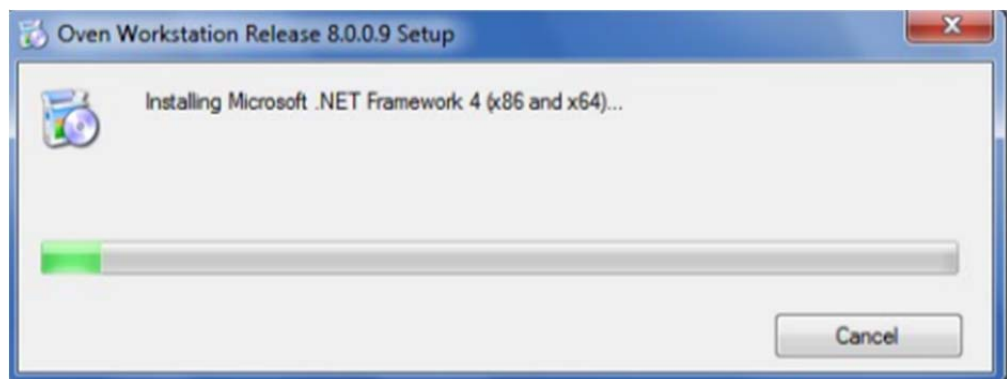
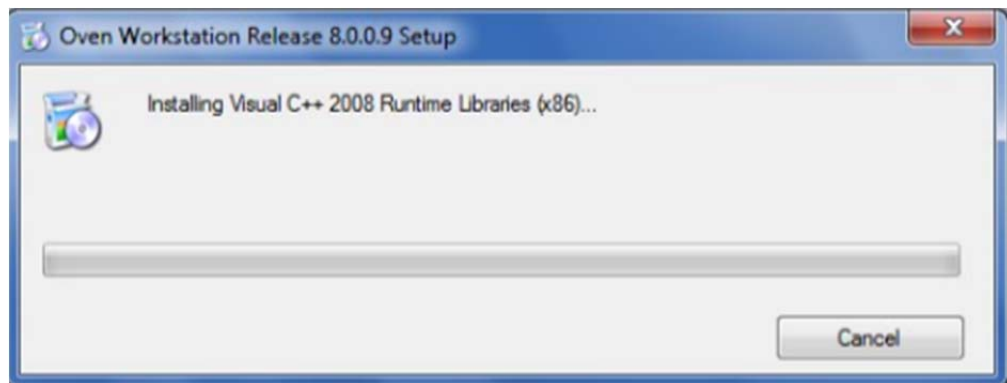
Heller Industries, Inc.

4 Vreeland Road,
Florham Park, NJ 07932
Phone: (973) 377-6800
Fax: (973) 377-3862

4. If Visual C++ 2008 Runtime Libraries are not installed, the following message will display. Click Install.



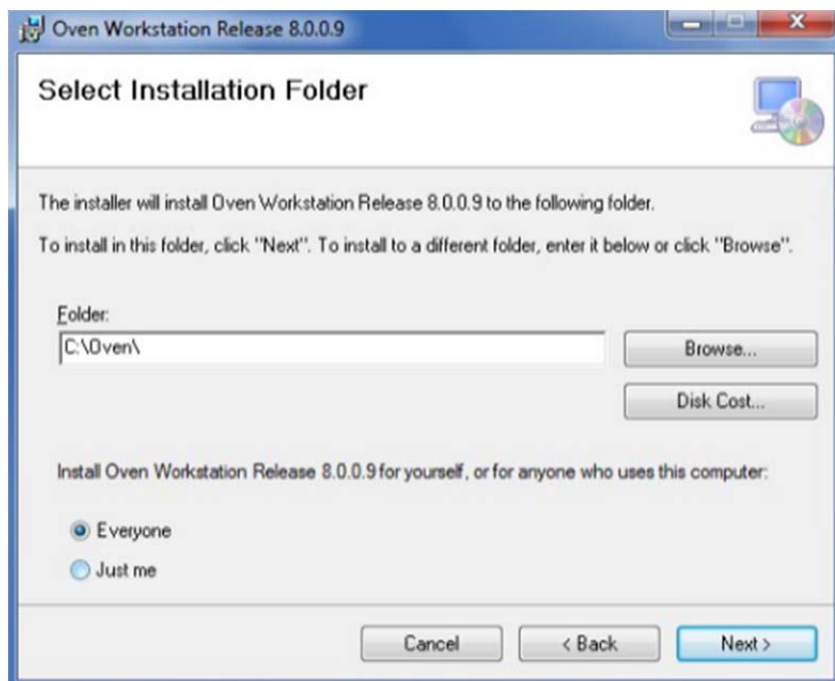
5. The Installation will start for Visual C++ 2008 Runtime Libraries and Microsoft .NET Framework 4.



6. After installation of Visual C++ 2008 runtime libraries and .NET, (or if already installed), the oven operating program installation will begin.
7. Click “Next >” to continue installation



8. Keep the default settings and click “Next >”



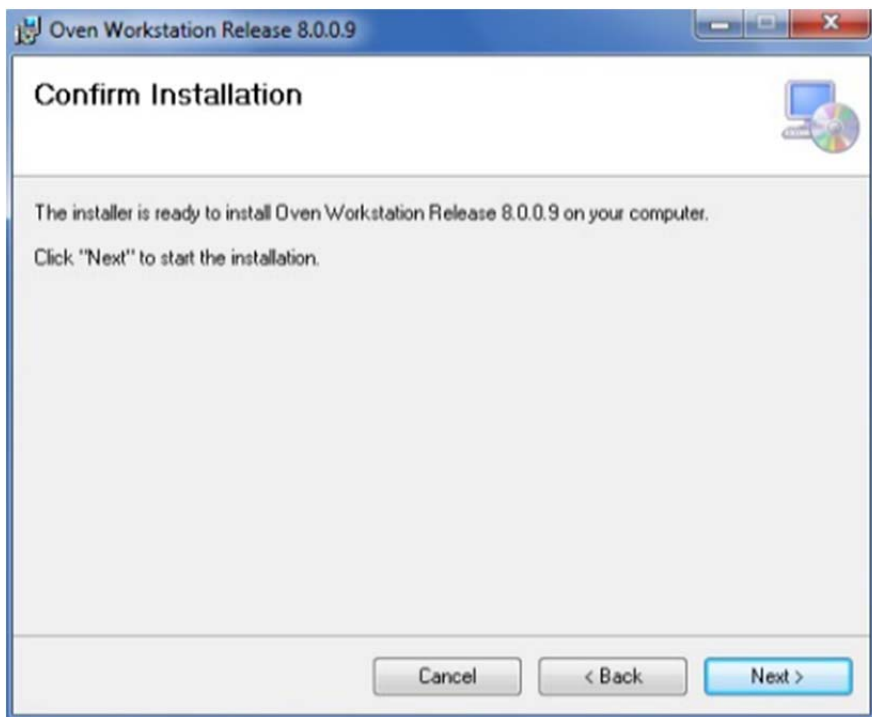


HELLER
INDUSTRIES

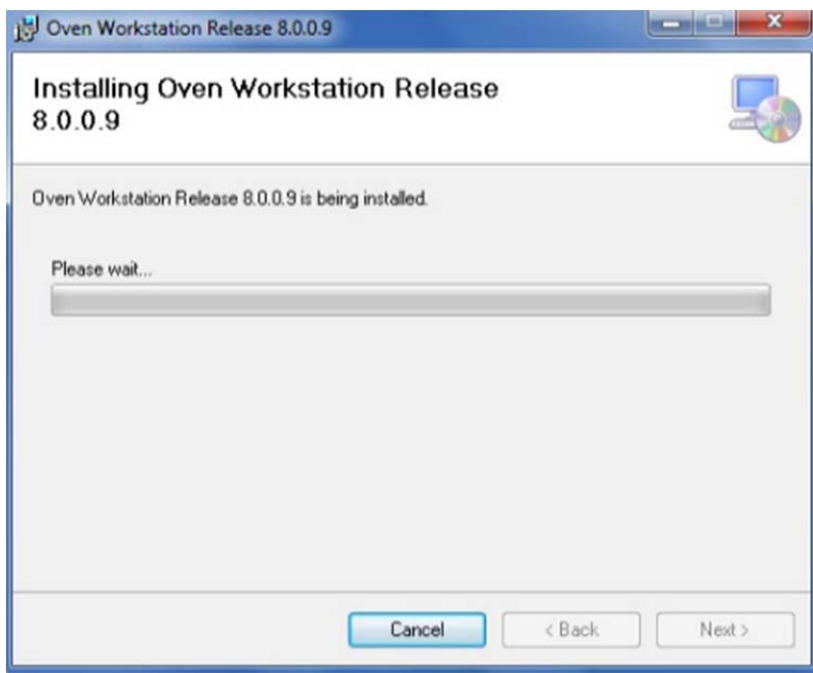
Heller Industries, Inc.

4 Vreeland Road,
Florham Park, NJ 07932
Phone: (973) 377-6800
Fax: (973) 377-3862

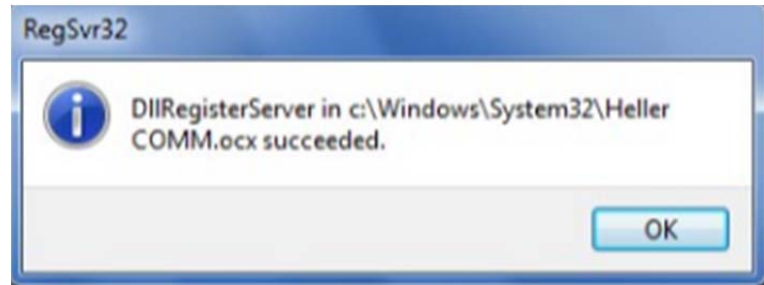
9. Click “Next>” You may see a screen, not shown, telling you that the software is going to make changes to the computer. Select “OK”.



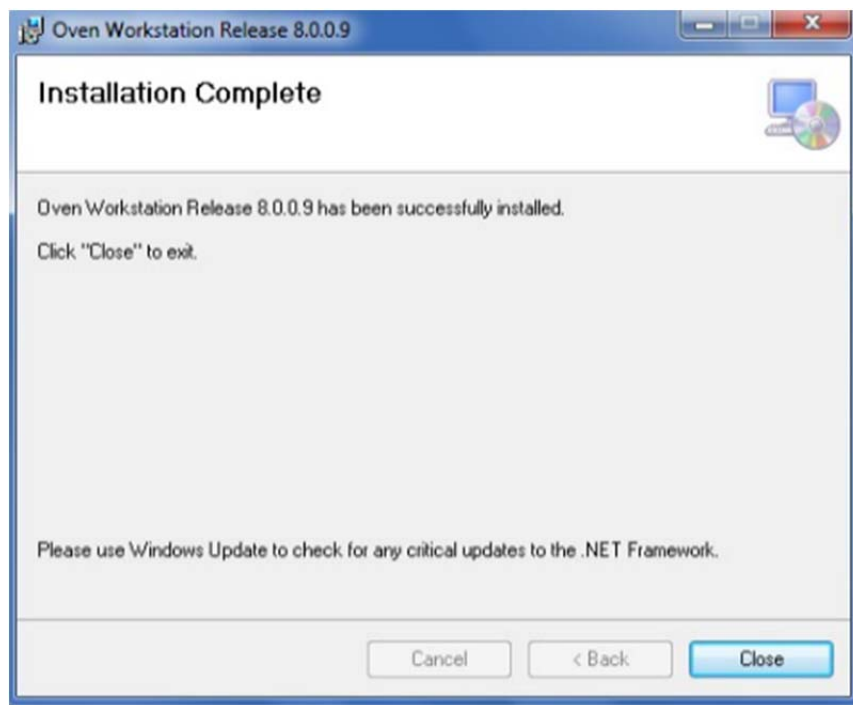
10. The installation status screen will appear.



11. After completing the installation, “Heller COMM.ocx” will get registered. Click OK.



12. On “Installation Complete” message, click Close.



13. Restart the computer after the installation is complete.
14. Before running the “Oven Operating Program”, “Oven Setup Wizard” needs to be run to configure the oven options.
Start > All Programs > Oven Workstation > Oven Setup Wizard,
Default user=oven, password=oven.
15. After Setup Wizard is complete, update the HC2 driver version by running
C:\Oven\Drivers\Hc2DriverUpdate.exe.

Refer “HC2 controller driver version check” section-III for more information.



HELLER
INDUSTRIES

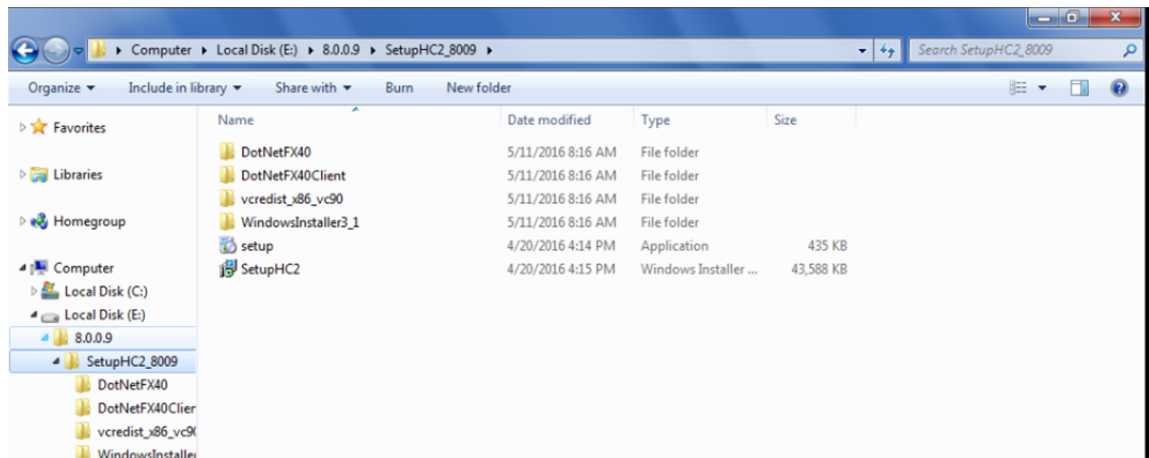
Heller Industries, Inc.

4 Vreeland Road,
Florham Park, NJ 07932
Phone: (973) 377-6800
Fax: (973) 377-3862

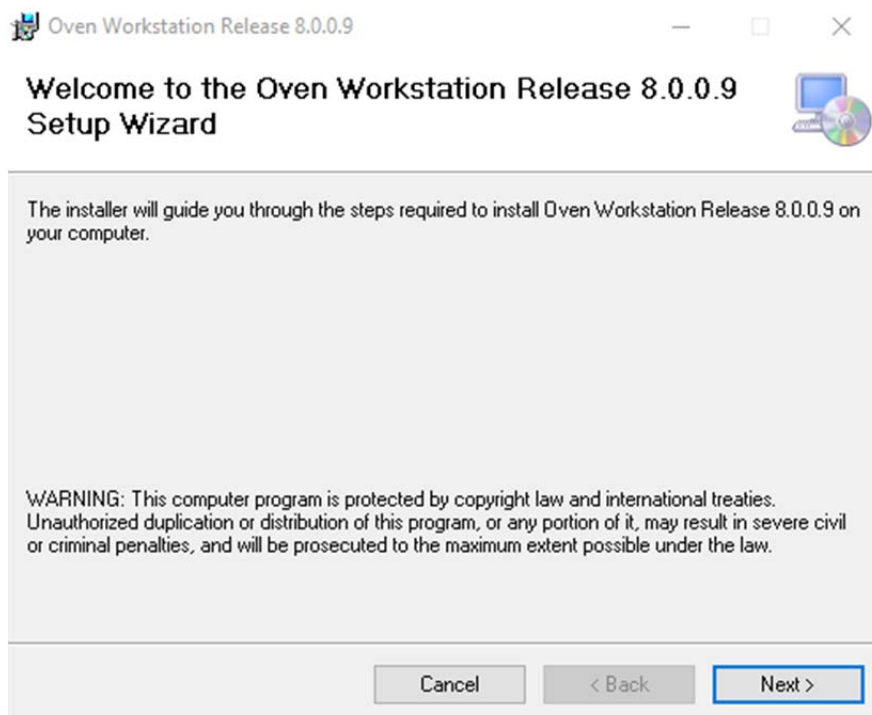
III. Oven program installation, *Windows 8 or 10*

Note: Before installing the Oven software verify that .Net3.5 framework is installed. See Section V on page 18. Windows will need an internet connection to install .Net3.5 framework.

1. Run the setup.exe file from the software installation CD or a drive folder. Make sure all files and folders are present as shown below before running setup.exe.



2. Select Next.





Heller Industries, Inc.

4 Vreeland Road,
Florham Park, NJ 07932
Phone: (973) 377-6800
Fax: (973) 377-3862

3. Various Installation Windows will appear.
4. Continue to select "Next"

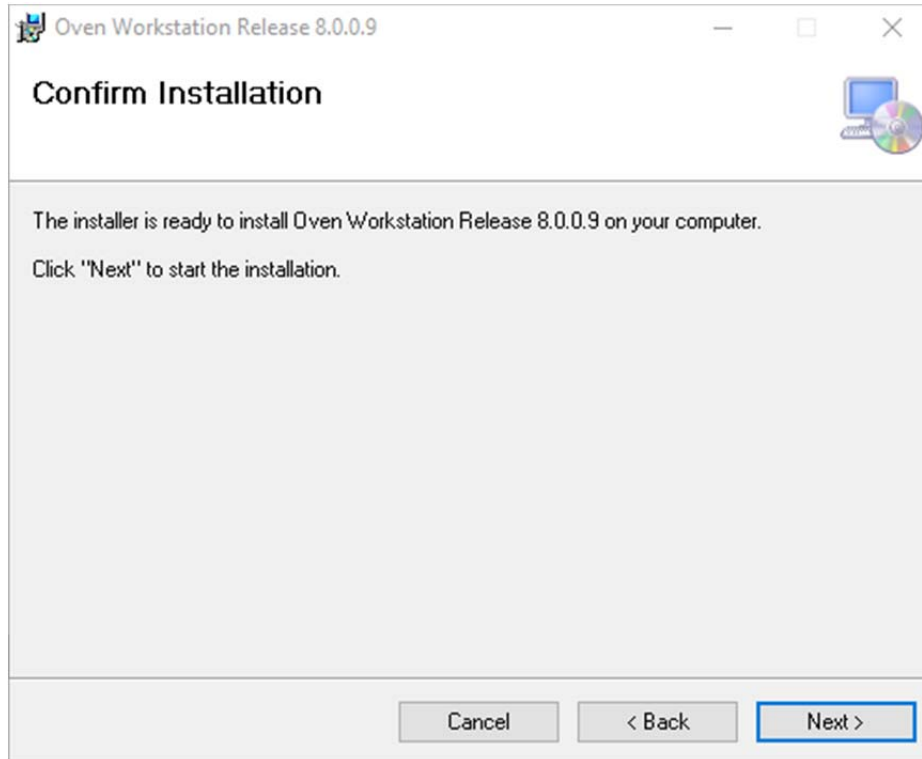
The screenshot shows a Windows-style installation window titled "Oven Workstation Release 8.0.0.9". The window has a standard title bar with minimize, maximize, and close buttons. The main content area is titled "Select Installation Folder" and includes a small icon of a computer and a CD. The text inside the window reads: "The installer will install Oven Workstation Release 8.0.0.9 to the following folder. To install in this folder, click 'Next'. To install to a different folder, enter it below or click 'Browse'." Below this text is a text box labeled "Folder:" containing the path "C:\Oven\". To the right of the text box are two buttons: "Browse..." and "Disk Cost...". Below the text box and buttons is a section titled "Install Oven Workstation Release 8.0.0.9 for yourself, or for anyone who uses this computer:" with two radio button options: "Everyone" (which is selected) and "Just me". At the bottom of the window are three buttons: "Cancel", "< Back", and "Next >". The "Next >" button is highlighted with a blue border.



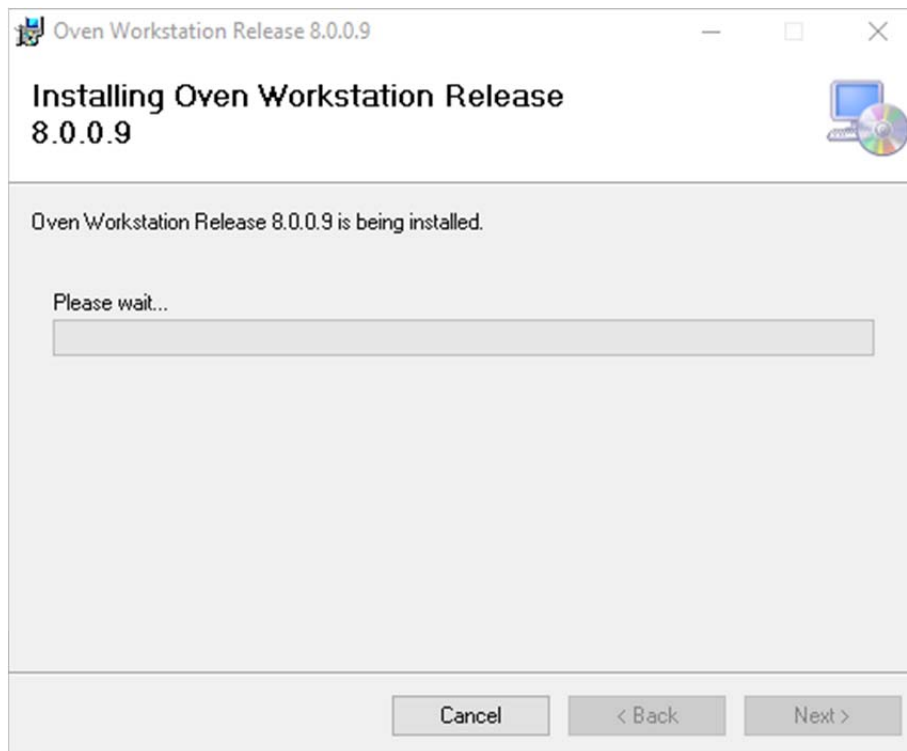
HELLER
INDUSTRIES

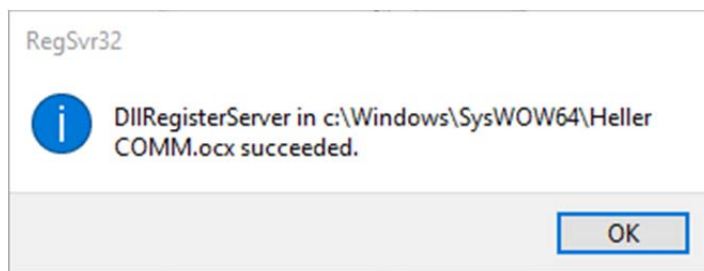
Heller Industries, Inc.

4 Vreeland Road,
Florham Park, NJ 07932
Phone: (973) 377-6800
Fax: (973) 377-3862

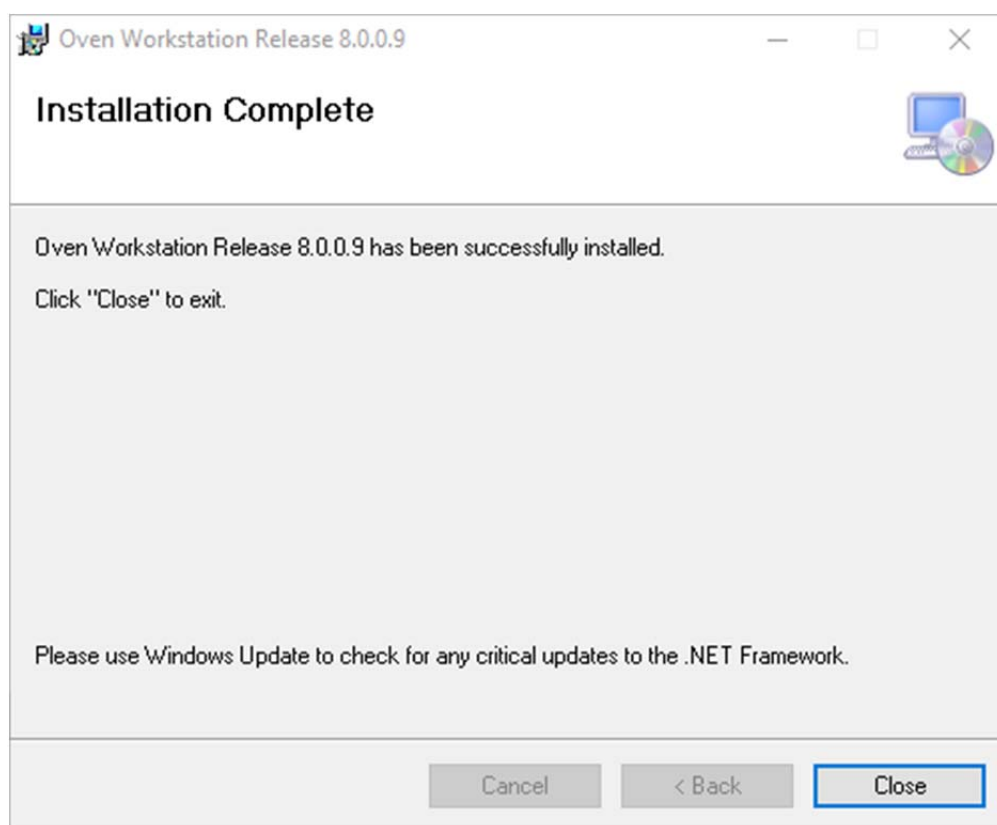


5. Select “Next” when highlighted.





6. Select OK for above window.
7. Select Close below.



8. The oven software is now installed.



Heller Industries, Inc.

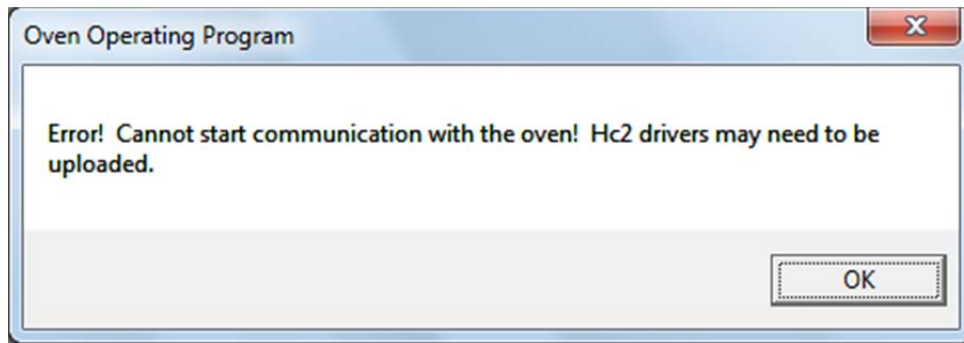
4 Vreeland Road,
Florham Park, NJ 07932
Phone: (973) 377-6800
Fax: (973) 377-3862

IV. Setting up computer IP address: (192.168.10.1)

Notes:

- Use RJ-45 network patch cable for communication with HC2 controller.
- Default IP address of main HC2 controller is: 192.168.10.250. This cannot be changed.
- Set Computer IP address as: 192.168.10.1. Refer “Setting up computer IP address” section below.

Note: The following message will be displayed when oven program starts and if computer IP address is not set properly or network cable is not connected or power to HC2 controller is off or HC2 controller driver version is older than 6.0.0.30.



To change computer IP address, refer steps below,

1. Select Network and Sharing Center as
Start -> Control Panel -> Network and Sharing Center



, double click on the icon.

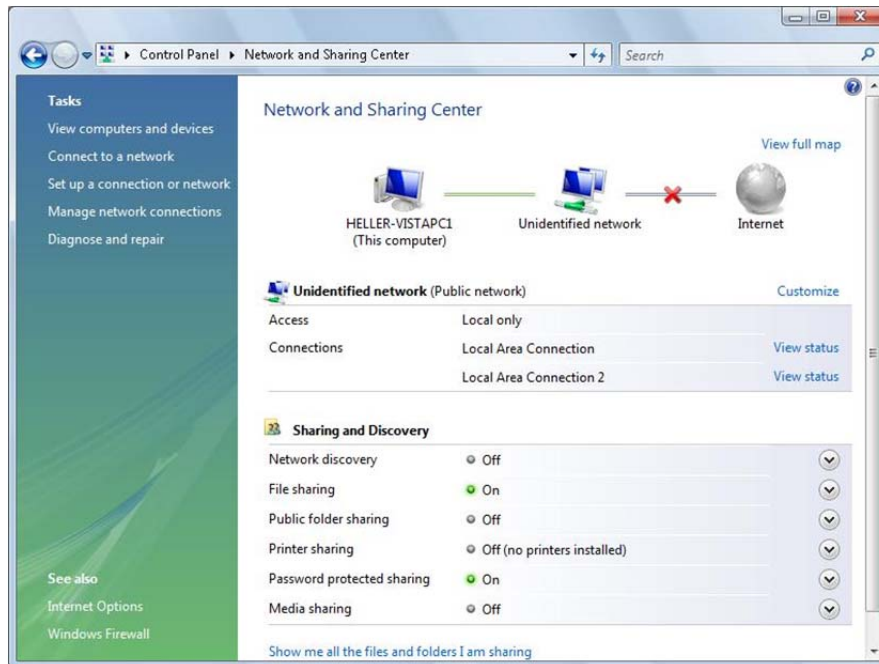


HELLER
INDUSTRIES

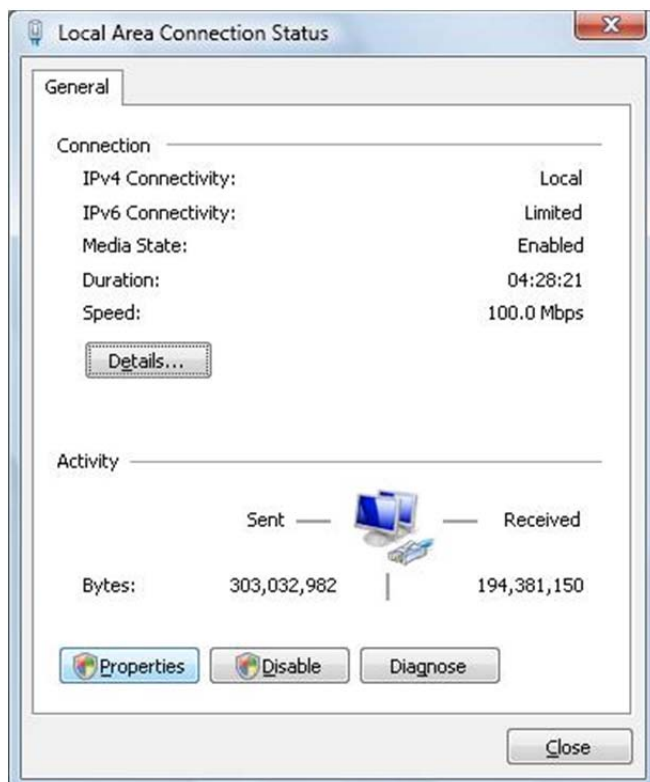
Heller Industries, Inc.

4 Vreeland Road,
Florham Park, NJ 07932
Phone: (973) 377-6800
Fax: (973) 377-3862

2. Click on “View status” for Local Area Connection that is used for connecting to HC2 controller.



3. Click on “Properties” button to access LAN properties window



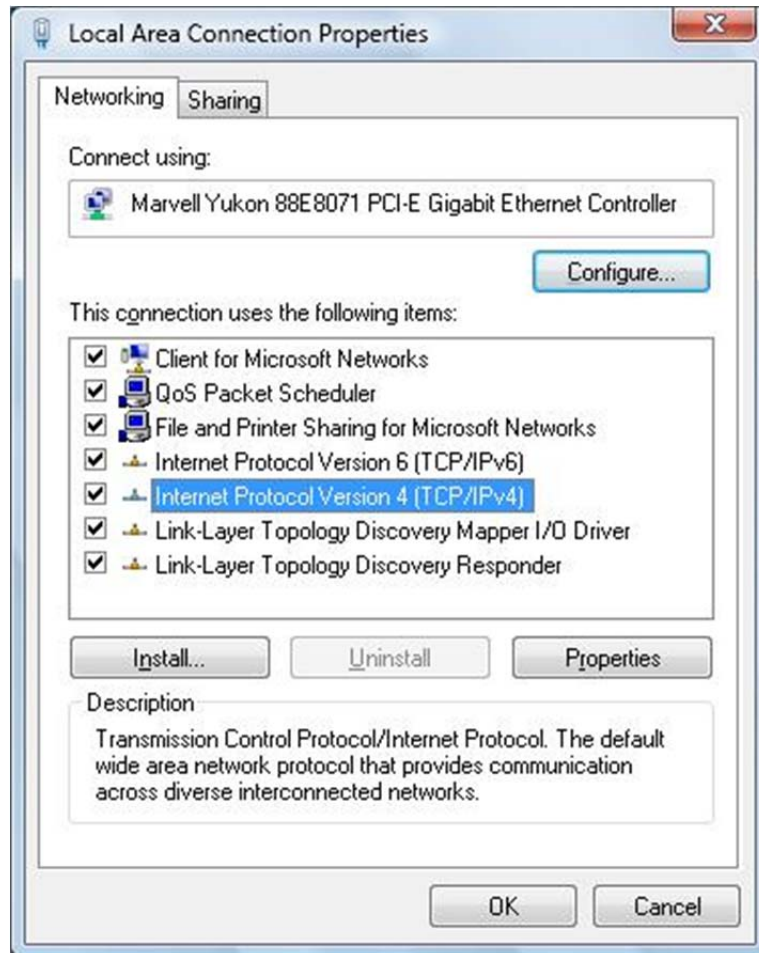


HELLER
INDUSTRIES

Heller Industries, Inc.

4 Vreeland Road,
Florham Park, NJ 07932
Phone: (973) 377-6800
Fax: (973) 377-3862

4. Highlight/Select “Internet Protocol Version 4 (TCP/IPv4) and then click on “Properties”.





HELLER
INDUSTRIES

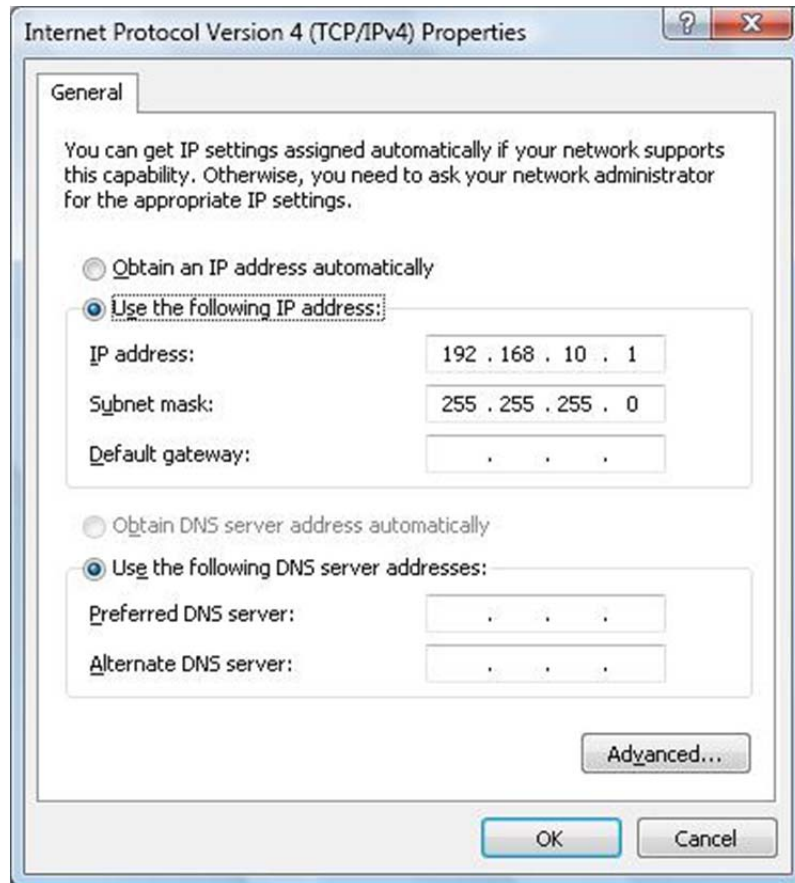
Heller Industries, Inc.

4 Vreeland Road,
Florham Park, NJ 07932
Phone: (973) 377-6800
Fax: (973) 377-3862

5. By default “Obtain an IP address automatically” is checked on; change selection to “Use the following IP address:” and set as:

IP address: 192.168.10.1

Subnet mask: 255.255.255.0



- Click “OK” to save changes and close the window.
- Click “OK” to close “Local Area Connection Properties” window.
- Click “Close” on “Local Area Connection Status” window.
- Exit/Close control panel.



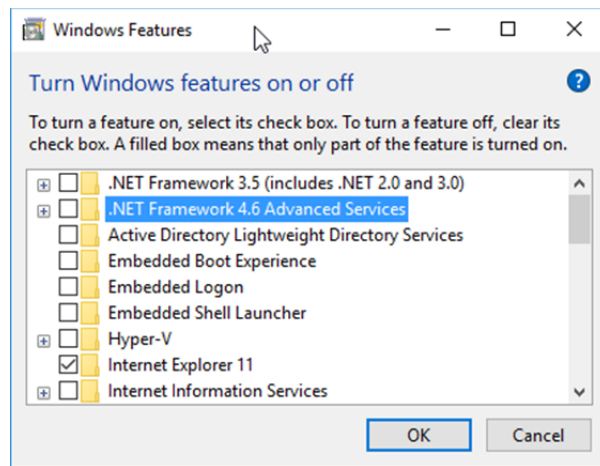
HELLER
INDUSTRIES

Heller Industries, Inc.

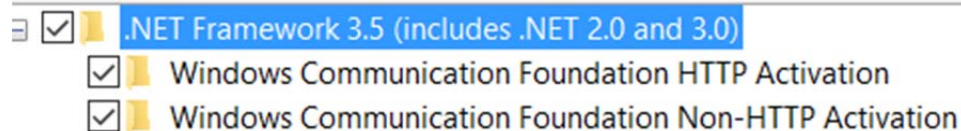
4 Vreeland Road,
Florham Park, NJ 07932
Phone: (973) 377-6800
Fax: (973) 377-3862

V. Installing .Net3.5 framework for Windows 10

1. If the .Net3.5 Framework is not installed, you will get an error message that the HellerCOMM.ocx could not be installed.
2. If the oven program was installed, uninstall it.
3. Access Control Panel >Programs > Programs and Features.
4. On left hand side, you will see a link to “Turn Windows features on or off”, click on it.
5. A separate window will appear.



6. Select the “+” sign next to .NET Framework 3.5 (includes .Net 2.0 and 3.0). This will expand the selection as shown in the following figure.
7. Select the check box on “.NET Framework 3.5 ...” and two sub-selections.



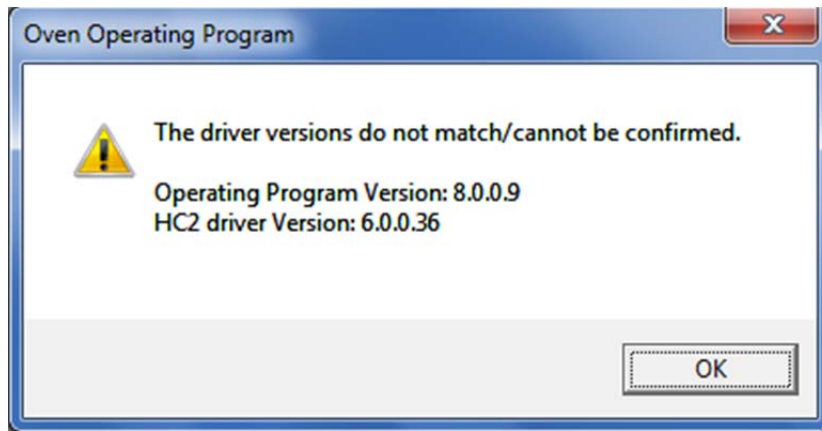
8. Click OK.
9. On the next window, click ok.
10. Reboot the PC.

VI. HC2 controller driver version check and upgrade:



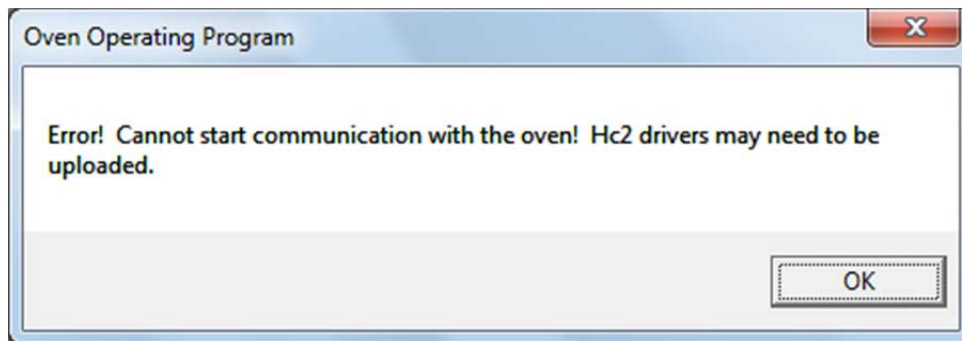
A. HC2 controller driver version check:

Note: For example, if oven program version 8.0.0.9 is started with older HC2 controller driver/firmware version 6.0.0.36 or 6.2.0.x, the following message will appear during oven program version 8.0.0.9 startup;



Click OK to update the HC2 controller drivers. The driver update program will start automatically.

Note that for HC2 controllers with installed driver versions 6.0.0.30 or earlier (4.x.x.x, 5.x.x.x), when oven program version 8.0.0.6 starts, the following message will display.



In this case click OK and update HC2 drivers manually.

B. Update HC2 drivers manually:



Close all programs and make sure oven is not running before performing driver update.

Run “C:\Oven\Drivers\Hc2DriverUpdate.exe” program.

Step 1: IP Address

Enter the IP Address of the Hc2 device: 192 . 168 . 10 . 250

Step 2: Available Components

The following list contains new software that is available to upload to the Hc2. If the list is empty, select the Browse button to select the correct software update.

Component	Version	Status
Hc2Updater	8.0.0.9	
hc2xctl.o	8.0.0.9	
hc2xctl_app	8.0.0.9	
hc2xio.o	8.0.0.9	
hc2xwd.o	8.0.0.9	
load_system	8.0.0.9	

Browse...

Step 3: Installed Components

Clicking the Query button will connect to the Hc2 at the above address and retrieve the currently installed software versions.

Component	Version
-----------	---------

Query

Step 4: Upload New Firmware

Upload...

Confirm HC2 device IP address is set as 192.168.10.250 for single HC2 configuration or primary HC2 for dual HC2 oven configuration.

Click on “**Query**” button which will start connection to HC2 controller and list current installed driver versions from the connected HC2 controller.

Notes:



- If windows firewall warning shows up, make sure to allow HC2DriverUpdater.exe for network connection.
- For ovens with dual HC2, upload secondary HC2 drivers by running C:\Oven\Drivers\Secondary Hc2 Drivers\Hc2DriverUpdate.exe. Confirm secondary HC2 device IP address is set as 192.168.10.251.
- Make sure no ftp services are running on the PC, this will cause network connection error for HC2DriverUpdater program.

Hc2 Driver Update

Step 1: IP Address
Enter the IP Address of the Hc2 device: 192 . 168 . 10 . 250

Step 2: Available Components
The following list contains new software that is available to upload to the Hc2. If the list is empty, select the Browse button to select the correct software update.

Component	Version	Status
Hc2Updater	8.0.0.9	
hc2xctl.o	8.0.0.9	
hc2xctl_app	8.0.0.9	
hc2xio.o	8.0.0.9	
hc2xwd.o	8.0.0.9	
load_system	8.0.0.9	

Browse...

Step 3: Installed Components
Clicking the Query button will connect to the Hc2 at the above address and retrieve the currently installed software versions.

Component	Version
hc2xctl.o	6.0.0.36
hc2xctl_app	6.0.0.36
hc2xio.o	6.0.0.36
hc2xwd.o	6.0.0.36

Query

Step 4: Upload New Firmware
Upload...

Once installed drivers are listed, click “**Upload**” to start uploading new drivers. Upload process status for each file will be displayed. Upon completion, message will display to reboot the HC2.



Hc2 Driver Update

Step 1: IP Address

Enter the IP Address of the Hc2 device:

Step 2: Available Components

The following list contains new software that is available to upload to the Hc2. If the list is empty, select the Browse button to select the correct software update.

Component	Version	Status
Hc2Updater	8.0.0.9	Updated
hc2xctl.o	8.0.0.9	Updated
hc2xctl_app	8.0.0.9	Updated
hc2xio.o	8.0.0.9	Updated
hc2xwd.o	8.0.0.9	Updated
load_system	8.0.0.9	Updated

Step 3: Installed Components

Clicking the Query button will connect to the Hc2 at the above address and retrieve the currently installed software versions.

Component	Version
Hc2Updater	8.0.0.9
hc2xctl.o	8.0.0.9
hc2xctl_app	8.0.0.9
hc2xio.o	8.0.0.9
hc2xwd.o	8.0.0.9
load_system	8.0.0.9

Step 4: Upload New Firmware

The HC2 was successfully updated, please reboot the Hc2.

Click “Close” to exit driver update program and **reboot the HC2.**

After finishing the update, power cycle HC2 controller by turning off and on main oven power.



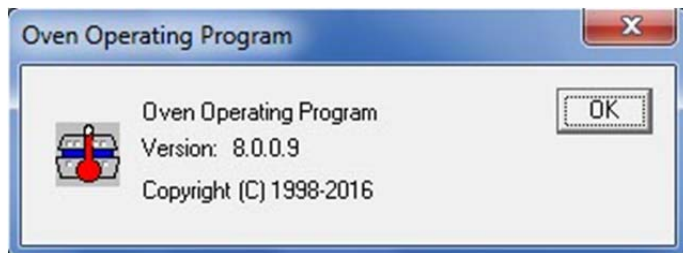
Heller Industries, Inc.

4 Vreeland Road,
Florham Park, NJ 07932
Phone: (973) 377-6800
Fax: (973) 377-3862

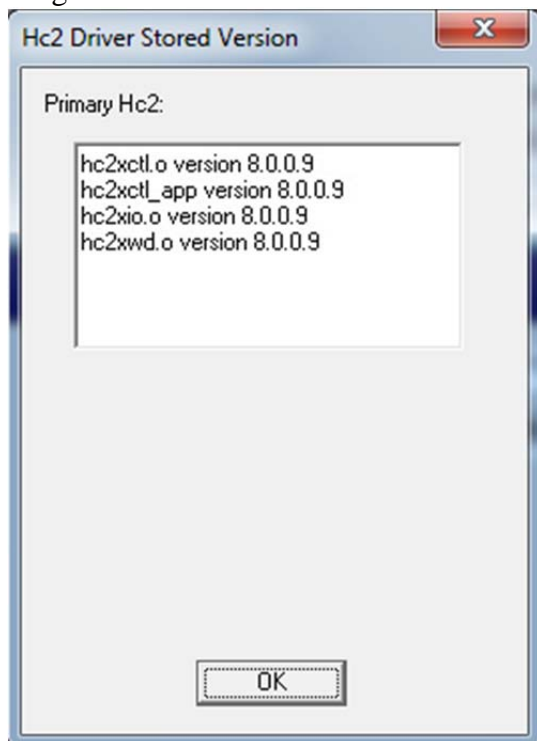
Check program version and HC2 version when oven program is running. Both versions should match.

Oven program version and HC2 version can be checked under Help menu on Oven Operating Program.

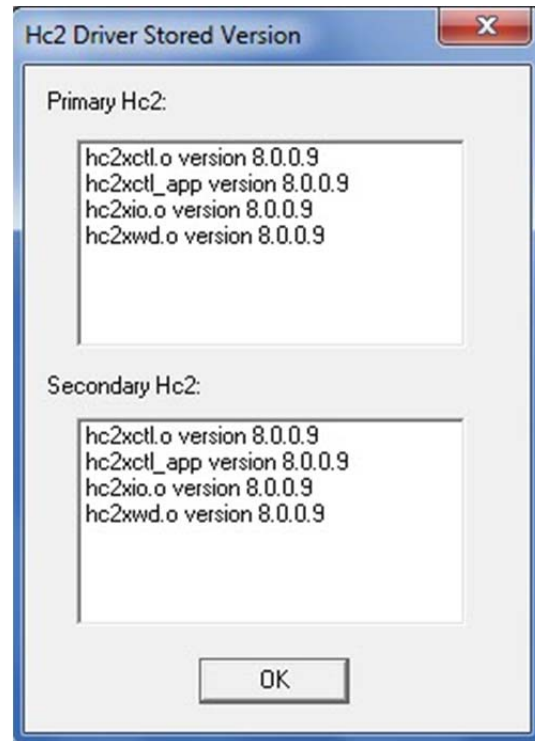
For example:



Single HC2 ovens:



Dual HC2 ovens:





Heller Industries, Inc.

4 Vreeland Road,
Florham Park, NJ 07932
Phone: (973) 377-6800
Fax: (973) 377-3862

VII. Uninstalling older version software:

Before uninstalling oven software for an upgrade, oven setup parameters and recipe files need to be copied. Setup parameters will be used after installing new software to setup the oven. Make sure oven program is not running during backup or uninstall.

Backup Setup Parameters:

Run Oven Setup Wizard (Start -> All Programs -> Oven Workstation -> System Setup Wizard) and write down all the setup parameters from all pages of the setup wizard.

One easy way is to take a screen shot of all setup pages and popup windows for some options. Press ALT + Print Screen to capture the active window or Print Screen to capture the complete screen display and then using windows paint program paste the captured image and save as an image named something like Oven Setup Screen 1, Oven Setup Screen 2 etc....

Backup Recipe files:

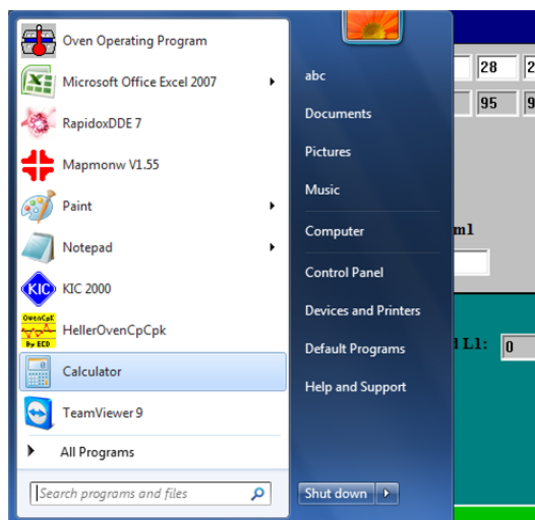
Using Windows Explorer, copy all, (or required), recipes from C:\Oven\Recipe Files folder to a storage media or temporary backup folder on the computer.

These recipe files will need to be copied back after new software is installed.

Note: recipe files from some previous version software may not be compatible with newer version software. If old recipes are not compatible, then these recipes need to be created manually.

Uninstall existing oven software:

1. For Windows 7, Access Control Panel, Start > Control Panel

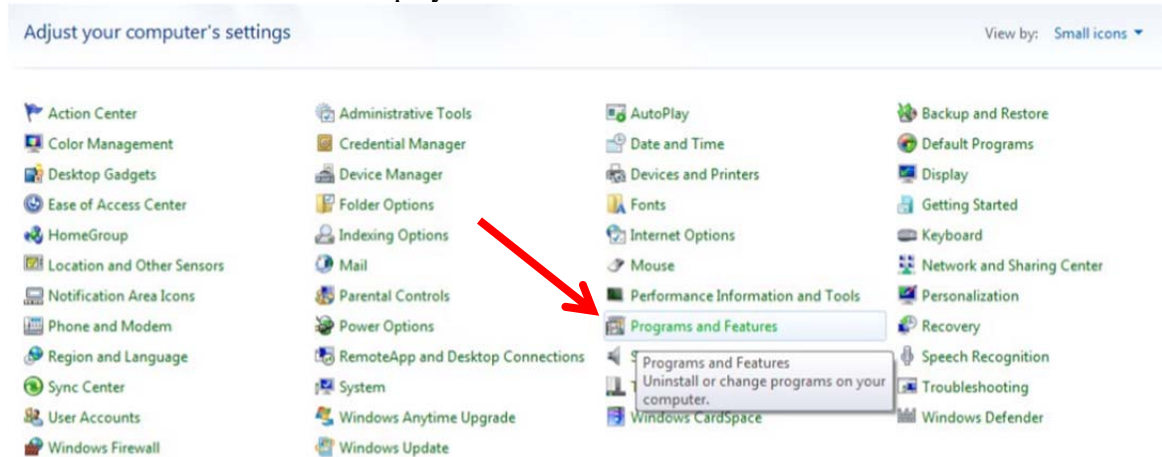




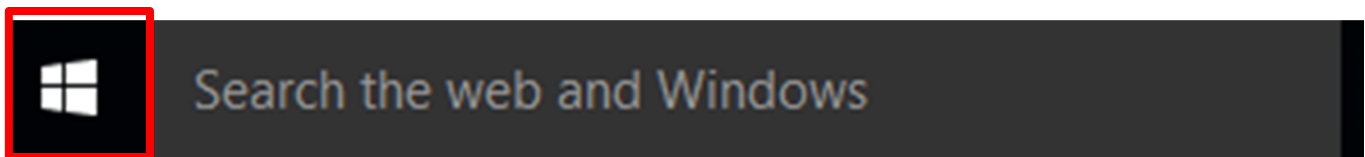
Heller Industries, Inc.

4 Vreeland Road,
Florham Park, NJ 07932
Phone: (973) 377-6800
Fax: (973) 377-3862

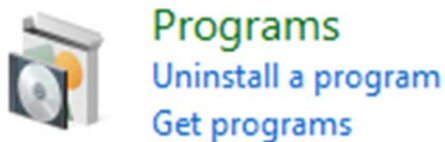
2. Double click on “Programs and Features”. Your screen may look different depending on how it was selected to be displayed.



3. For windows 8 or 10, Select the Windows Icon and then select “All apps”



4. Scroll down until you see the Windows System folder and select it.
5. Scroll down slightly and you will see the control panel icon. Select the Icon.
6. Select the Programs Icon.

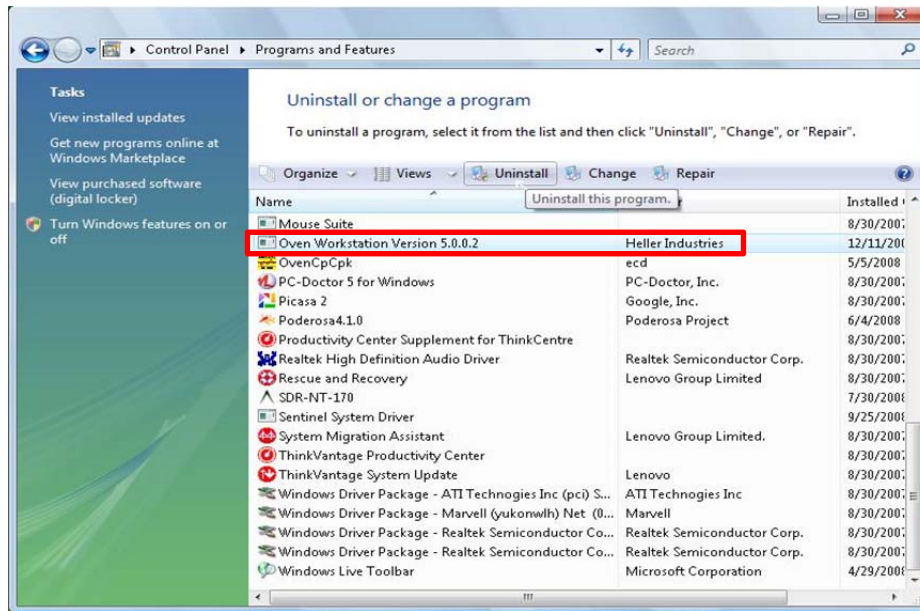




Heller Industries, Inc.

4 Vreeland Road,
Florham Park, NJ 07932
Phone: (973) 377-6800
Fax: (973) 377-3862

7. For all windows versions, continue from here.
8. From the list of installed programs, select “Oven Workstation Version 4.x.x.x/5.x.x.x/6.x.x.x/8.x.x.x”.
9. Click on “Uninstall” button to uninstall program completely.



10. After the program is uninstalled, delete C:\Oven folder or rename to some different name.
11. Using windows explorer, search for following files
C:\Windows\System32\WIN_HDAC.DLL
C:\Windows\System32\Heller comm.ocx
Delete these files if they exist.
Also make sure that there are no other copies of these (WIN_HDAC.DLL, Heller comm.ocx) files on C:\ drive.
12. Restart the computer.